

ISSN 2456-4990

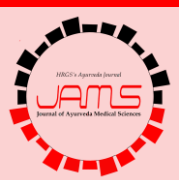


J Ayu Med
Sci -

Quarterly Journal
for Rapid
Publication of
Researches in
Ayurveda and
Other Traditional
Medicines

Journal of Ayurveda Medical Sciences

J Ayu Med Sci | 2017 | Vol 2 | Issue 3 (Jul - Sep)



www.jayumedsci.com
©Journal of Ayurveda Medical Sciences

Comparative Physico-chemical Analysis of Apamarga Kshara Samples Prepared in Presence of Jala and Gomutra

Shiv Om Dixit, Ravindra Angadi, Sunil Kumar Koppala Narayana¹

Department of Rasashastra and Bhaishajya Kalpana, Shri Dharmasthala Manjunatheshwara College of Ayurveda, Kuthpady, Udipi, Karnataka 574118. ¹Department of Pharmacognosy, Siddha Central Research Institute, Central Council for Research in Siddha, Ministry of AYUSH, Govt. of India, Arumbakkam, Chennai 600106, India.

ABSTRACT

Introduction: Kshara Kalpana is one of the prominent and widely practiced dosage form of Ayurveda. Varied descriptions regarding the method of preparation are available in different classics. Sushruta Samhita mentions the use of either Jala or Gomutra as the solvent. With these facts in place the present study was conducted to find the differences between the two samples. The aim of the study was to prepare two samples of Apamarga Kshara in presence of Jala (AKJ) and Gomutra (AKG) respectively and to do the physico-chemical analysis of the two samples. **Methods:** The preparation of AKJ and AKG samples were carried out by following the method as mentioned in Sushruta Samhita. Two samples were analysed on parameters like organoleptic characters, loss on drying, total ash, water soluble ash, acid insoluble ash, pH, water soluble extractive and alcohol soluble extractive. **Results:** The loss on drying value for AKJ and AKG were 10.63% and 4.54% respectively. Total ash values of AKJ and AKG were 93.21% and 80.54% respectively. Both the samples had pH value of 10 and 100% water soluble extractive value. The values for alcohol soluble extractive for AKJ and AKG were 2.425 and 15.47% respectively. The results obtained from the study showed that both the samples have peculiar characteristics which are in accordance with the properties of Kshara. **Conclusion:** The study proved that pharmaceutical processing of the raw drugs imparts characteristic properties to the formulation which are evident by the physico-chemical analysis of the two samples.

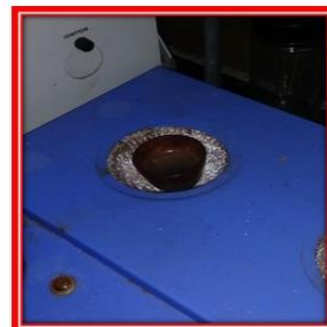
KEYWORDS

Apamarga kshara, Gomutra, Jala, Physico-chemical analysis.

PICTORAL ABSTRACT



Determination of acid insoluble ash



ARTICLE HISTORY

Received 11.09.2017 Accepted 11.10.2017

CORRESPONDENCE

Dr. Shiv Om Dixit

PG Scholar,

Department of Rasashastra And Bhaishajya Kalpana,

SDM College of Ayurveda,

Kuthpady, Udipi 574118, India.

Email: shivom.dixit@gmail.com

CITE THIS RESEARCH AS

Dixit SO, Angadi R, Narayana SK. Comparative Physico-chemical Analysis of Apamarga Kshara Samples Prepared in Presence of Jala and Gomutra. J Ayu Med Sci 2017;2(3):244-6.

DOI 10.5530/jams.2017.2.22

Bhaishajya Kalpana, the science of Ayurvedic Pharmaceutics primarily aims at the fortification of the medicaments and formulations thereby increasing their potency by exposing them to different Samskara^[1]. Conversion of the raw drug into a formulation helps in increasing the clinical efficacy as well as it renders it feasible for the administration to a patient. Kshara Kalpana is one such formulation, where the alkali present in the ash of the selected

plants is extracted^[2] and given the shape of a formulation. Vivid description regarding the preparation of Kshara is available in the classics, whereby many differences of opinions are also evident. Kshara is obtained by soaking the ash of the plant in suitable liquid medium. Sushruta Samhita mentions Jala and Gomutra being utilised as the liquid media to extract Kshara^[3]. Ayurveda has described various evaluative procedures to judge the quality of the pharmaceutical products, which are based on the physical qualities

of the final product. With advent of the recent advancements in science, there evolved many procedures and tests which could help in proper judgement of the properties and quality of the *Ayurvedic* drugs. These tests express the quality of the drug quantitatively and hence it makes feasible even for a layman to get an idea of the quality, purity and strength of the formulation. Keeping this in mind the two samples i.e. *Apamarga Kshara* with *Jala* (AKJ) and *Apamarga Kshara* with *Gomutra* (AKG) were evaluated in terms of organoleptic characters, physico-chemical parameters and the results were recorded.

1. Collection of raw drug

Apamarga required for the study was collected from S.D.M. Ayurveda Pharmacy, Kuthpady, Udipi during the month of February 2016. Fresh potable water was used for the preparation, while fresh *Gomutra* was collected locally from Udipi.

2. Pharmaceutical Preparation of Two Samples

The preparation was carried out following the method mentioned in *Sushruta Samhita*^[3]. 12 kg of *Apamarga* was collected, which was cut into small pieces and then kept in sunlight till it became completely dried. The weight of the *Apamarga* was found to be 8 kg after drying. It was then burnt completely and 900 g of greyish white coloured ash was obtained. It was divided into two equal parts to prepare AKJ and AKG samples. The ash was then soaked in six times of *Jala*, macerated and stirred well. Then allowed to stand for few minutes and filtration was carried out for 21 times. The filtrate thus obtained was kept on heat source till the *Kshara* was obtained in the form of flakes adhering to the base of the vessel. Similarly AKG sample was prepared by soaking the ash in fresh *Gomutra*.

3. Physico-chemical Study

The physico-chemical analysis of the two samples was done at S.D.M. Centre of Research in Ayurveda and Allied Sciences, Kuthpady, Udipi. Organoleptic characteristics like colour, odour, taste and consistency were recorded along with the evaluation of the parameters like loss on drying, total ash, water soluble ash, acid insoluble ash, pH, water soluble extractive value and alcohol soluble extractive value by following standard procedures^[4].

The quantity of AKJ and AKG samples obtained were 210g and 290g respectively. The higher quantity of AKG sample suggests that the solids present in *Gomutra* were also precipitated along with the *Kshara* present in the ash of the plant. The colour of AKJ sample was whitish while AKG was brownish in colour. The Brownish colour of the AKG was probably due to the presence of the pigments present in the *Gomutra*. The taste of both the samples was acrid but AKG was relatively more acrid. The acrid taste suggests the presence of alkali present in a sample. The relatively more acrid taste of the AKG was probably due the presence of alkali compounds present in *Gomutra* which were also present in the sample. The AKJ sample emitted a peculiar smell of an alkali while the AKG sample still retained the smell of *Gomutra* indicating the presence of the components of *Gomutra* present in it. Both the samples were obtained in the form of thin flakes and coarse powder. The organoleptic characters of the two samples are shown in Table 1.

Loss on drying is an important parameter to be assessed for the *Kshara*. As it is hygroscopic in nature due the presence of alkaline compounds and hence the loss on drying values denotes the limit to which the sample has absorbed moisture. The lesser the value of loss on drying the stable the *Kshara* is considered. The values of loss on drying for AKJ and AKG samples were found to be 10.63% and

4.54% respectively. These values suggest that AKG sample is less hygroscopic and hence more stable.

Table 1. Organoleptic characters of the two samples

Parameters	AKJ	AKG
Colour	White	Brown
Odour	Characteristic (Ksharagandhi)	Characteristic (Gomutragandhi)
Taste	Acrid (relatively less)	Acrid (relatively more)
Appearance	Coarse powder	Coarse powder

The ash values denoted the amount of inorganic material present in the given sample. As *Kshara* is obtained after complete burning of the organic matter of the drug and hence ash values should be higher. Total ash values for AKJ and AKG were found to be 93.21% and 80.54% respectively. The lower value in AKG samples denotes that some amount of organic matter was also present in the sample which was probably imparted by the constituents of *Gomutra*.

The values obtained for acid insoluble ash for AKJ and AKG were 0.40% and 0.20% respectively. Acid insoluble ash indicates about the ash obtained from the matter which are not soluble in water for example silica. This value should be less for a standard product. The values obtained for the two samples indicate the quality of the two samples. The water soluble ash for AKJ and AKG were 93.21% and 80.22% respectively.

pH depicts the relative acidity or alkalinity of any sample. The pH of both the samples was found to be 10 which clearly intimates about the alkaline nature of the *Kshara*.

Water soluble extractive value for both the samples was found to be 100%. The results obtained from the test depicts that both the samples consisted of the constituents which are completely soluble in water. This is in perfect compliance with the classics where it is been told that *Kshara* is extracted from the ash of the plant after soaking it in water. So the 100% value of water soluble extractives is justified.

The alcohol soluble extractive value for AKJ and AKG were 2.42% and 15.47% respectively. The result obtained from the test depict that both the samples had few of the constituents which are soluble in alcohol. When the values were compared it was found that AKG sample had greater value than that of AKJ sample. This difference may probably be due to the components of *Gomutra* which show solubility in both water and alcohol. The results of physico-chemical analysis are tabulated in Table 2.

Studies have advocated for repeated washing of the ash as *Kshara* can be obtained after subsequent washing also. The quantity of *Kshara* obtained will be less as compared to the first wash still to extract the whole of *Kshara* repeated washing may prove to be beneficial.^[5] *Apamarga Kshara* has also proven its utility in clinical management of *Shwitra* (vitiligo).^[6] *Apamarga Kshara* is one of the basic medicament utilised in the preparation of *Ksharasutra* which is known to be a boon in the management of *Bhagandara* (fistula-in-ano). *Ksharasutra* prepared from *Apamarga Kshara* has shown better results than the one prepared by *Snuhi Ksheera* alone.^[7] *Apamarga Kshara* is also helpful in successfully managing the conditions of *Arsha* (haemorrhoids) when applied locally (*Ksharapatana*).^[8]

With the present study it could be concluded that pharmaceutical processing imparts specific qualities to a formulation which helps in the fortification of the clinical efficacy. *Kshara* sample prepared with *Gomutra* can be considered to be more stable when loss on drying is taken into consideration. It also possesses few components of *Gomutra* which may also have therapeutic activity of their own. A clinical study may further elucidate comparative efficacy of the two samples of *Kshara*.

Table 2. Results of physico-chemical analysis of the two samples

Parameters	AKJ	AKG
Loss on drying	10.63%	4.54%
Total ash	93.21%	80.54%
Acid insoluble ash	0.40%	0.20%
Water soluble ash	93.21%	80.22%
Alcohol soluble extractive value	2.42%	15.47%
Water soluble extractive value	100%	100%
pH	10	10

ACKNOWLEDGEMENTS The authors are thankful to SDM Centre for Research in Ayurveda and Allied Sciences, Udipi for providing essential facility and support for the study.

SOURCE OF SUPPORT Nil

CONFLICT OF INTEREST None declared

CONTRIBUTORS Selection of the topic after thorough study of the literature was done by Dr Angadi. Dr Shiv Om executed the experiments. Dr. Sunil Kumar helped in deciding the various parameters for the analysis of the two samples and contributed to editing of the manuscript to the acceptable form.

REFERENCES

1. Vaidya Jadavji Trikamji Acharya, editor, (1st ed). Charaka Samhita of Acharya Agnivesha, Sootra Sthana, Rasavimaniya, Chapter 1, Verse 21(2). Varanasi: Chaukhamba Orientalia, 2007; p.235.
2. The Ayurvedic Formulary of India. Part I, 2nd Ed. New Delhi: Government of India, Ministry of Health and Family Welfare, 2003; p.163.
3. Vaidya Yadavji Trikamji Acharya, Narayanaram Acharya, editors, (1st ed). Sushruta Samhita of Acharya Sushruta, Sootra Sthana, Ksharapakavidhi Adhyaya, Chapter 11, Verse 11-13. Varanasi: Chaukhamba Surabharti Prakasan, 2014; p.46-4.
4. Lohar DR. Protocol For Testing, 1st Ed. Ghaziabad: Pharmacopeial Laboratory For Indian Medicines, Government Of India, Ministry of Health and Family Welfare, p.49-50,112.
5. Hasmukh RJ, Galib R, Pradeep KP. Pharmaceutical standardization of *Apamarga Kshara*. J Ayurveda Integr Med 2015;6(4):290-4. Available from <https://www.ncbi.nlm.nih.gov/pmc/articles/PMC4719491/>
6. Hasmukh RJ, Galib R, Pradeep KP. Clinical efficacy of *Apamarga Kshara Yoga* in the management of *Shvitra* (vitiligo). Ayu 2015;36(2):163-8. Available from <https://www.ncbi.nlm.nih.gov/pmc/articles/PMC4784126/>
7. Supreeth JL, Bhuyan C, Gupta SK, Dudhamal TS. A comparative clinical study of *Snuhi Ksheera Sutra, Tilanala Kshara Sutra* and *Apamarga Kshara Sutra* in *Bhagandara* (Fistula in Ano). Ayu 2012;33(1):85-91. Available from <https://www.ncbi.nlm.nih.gov/pmc/articles/PMC3456871/>
8. Dudhamal TS, Gupta SK, Bhuyan C, Singh K. The role of *Apamarga Kshara* in the treatment of *Arsha*. Ayu 2010;31(2):232-5. Available from <https://www.ncbi.nlm.nih.gov/pmc/articles/PMC3215370/>